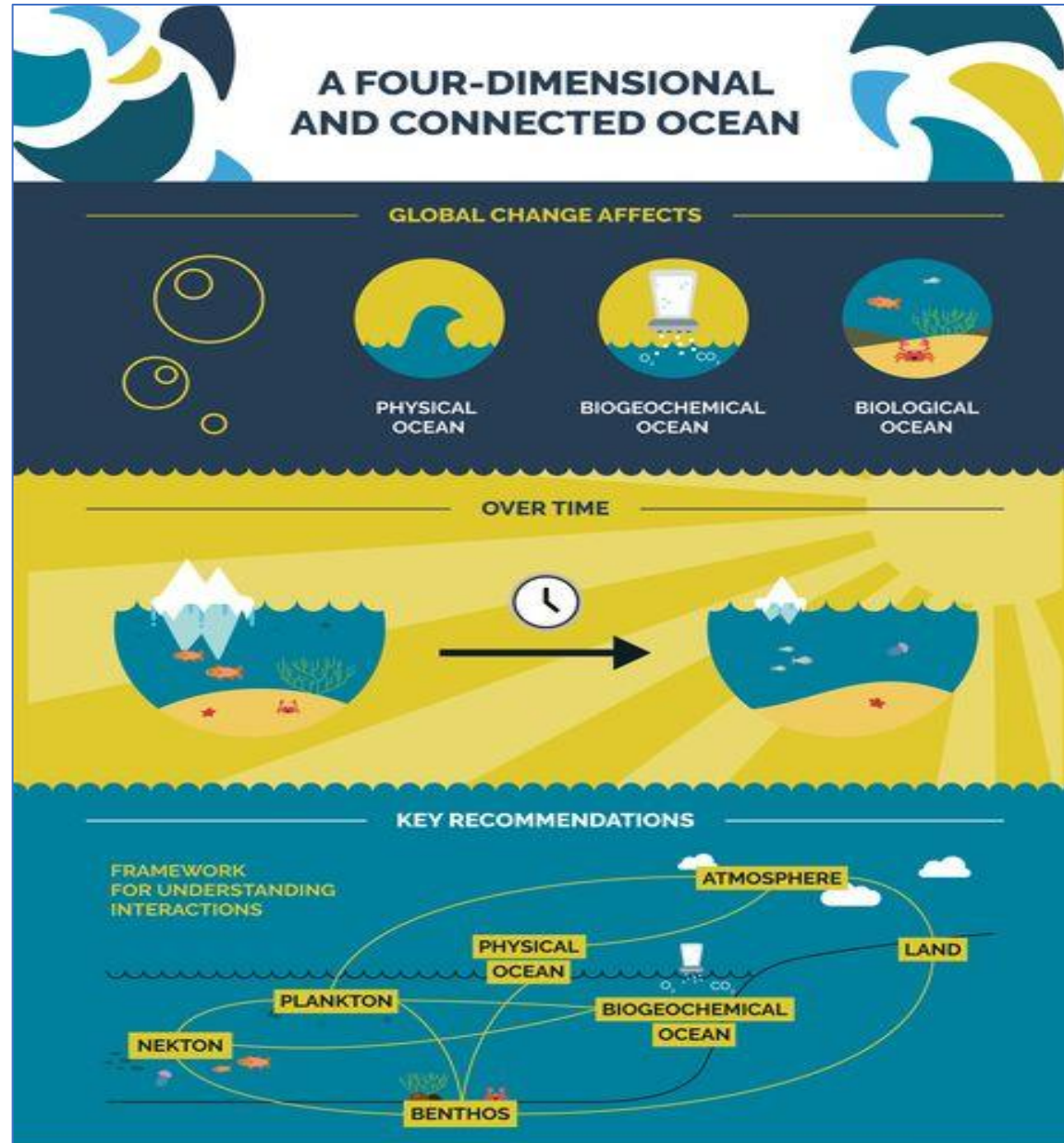


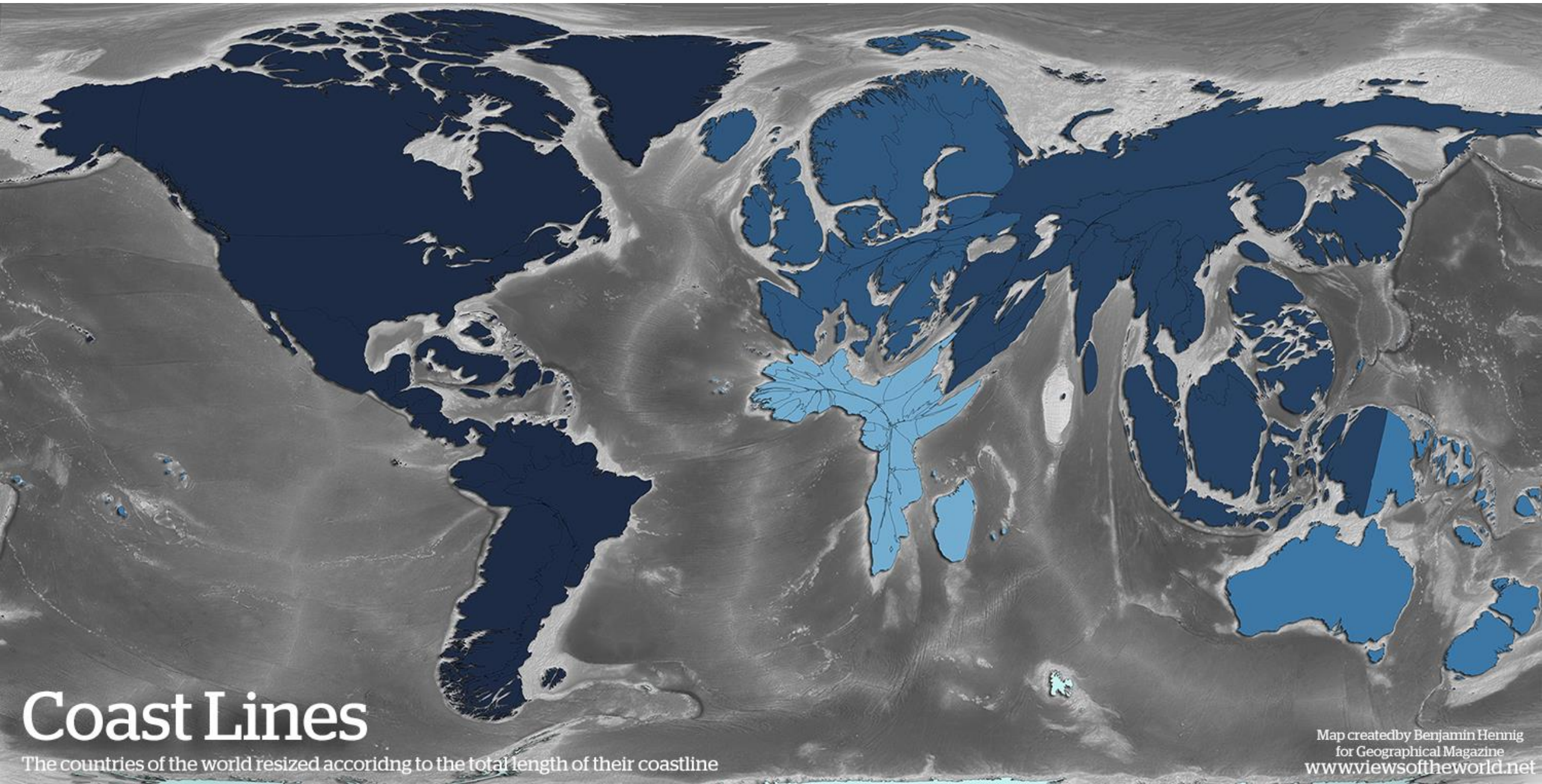
# **The Ocean : a global challenge and a planetary solution**

**Digital Report Platform**

**Graphics related to the first chapter of Part II : Understanding the land-sea interface**







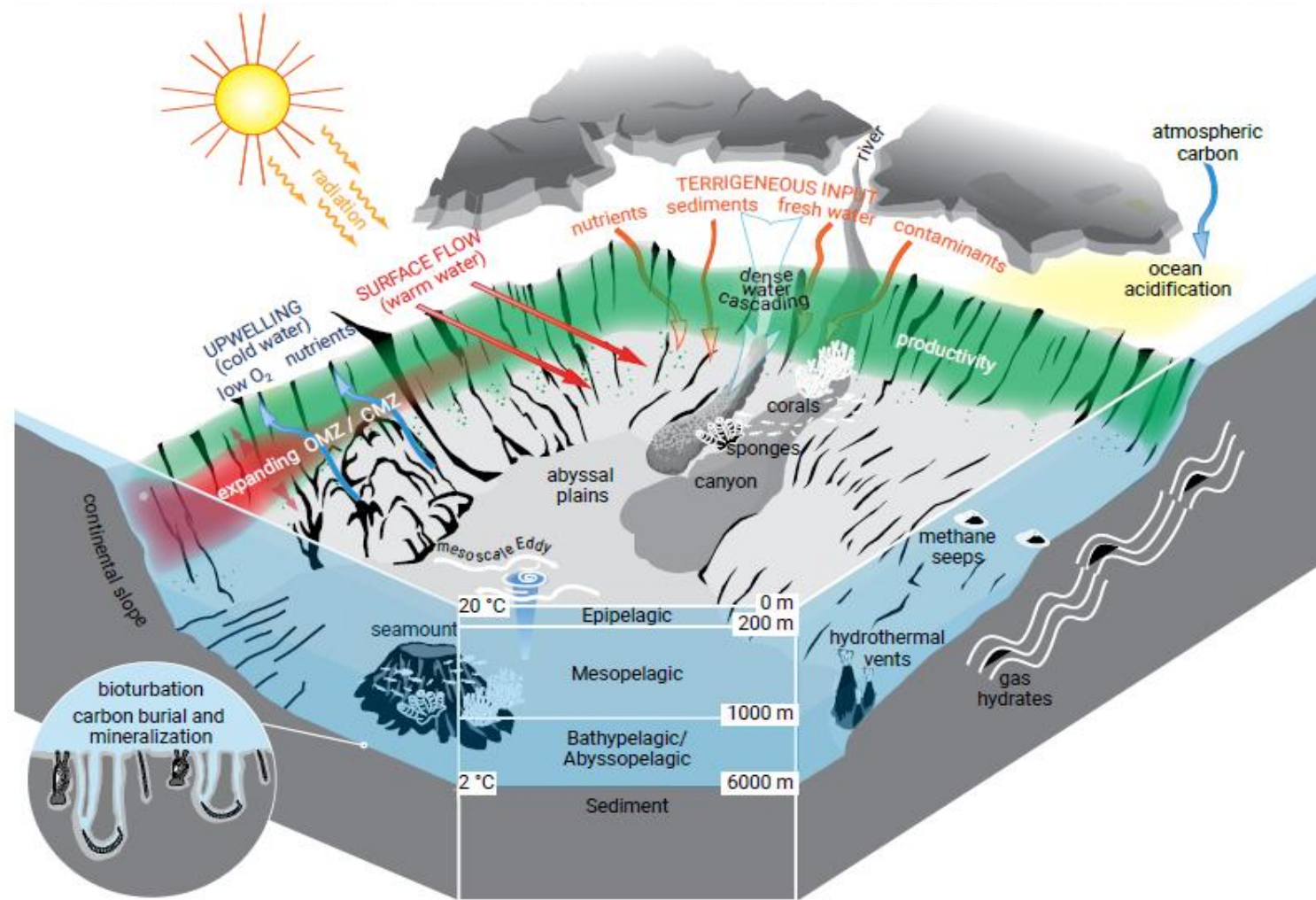
# Coast Lines

The countries of the world resized according to the total length of their coastline

Map created by Benjamin Hennig  
for Geographical Magazine  
[www.viewsoftheworld.net](http://www.viewsoftheworld.net)



Page 64-Habitat characteristics on continental slopes and canyons, with the effects of changing conditions, [The Second World Ocean Assessment](#) (WOA), p. 399, Nations Unies, New York, 2021



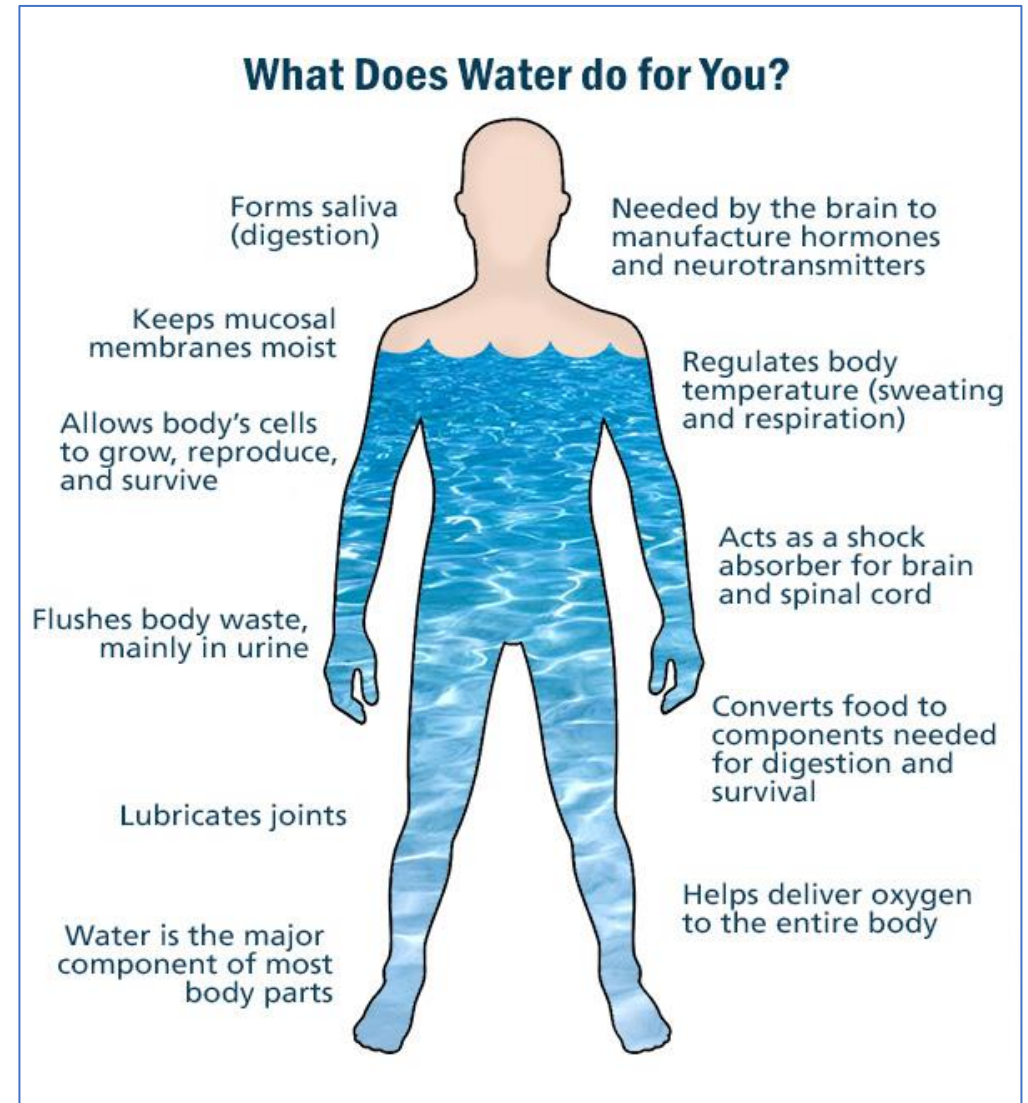
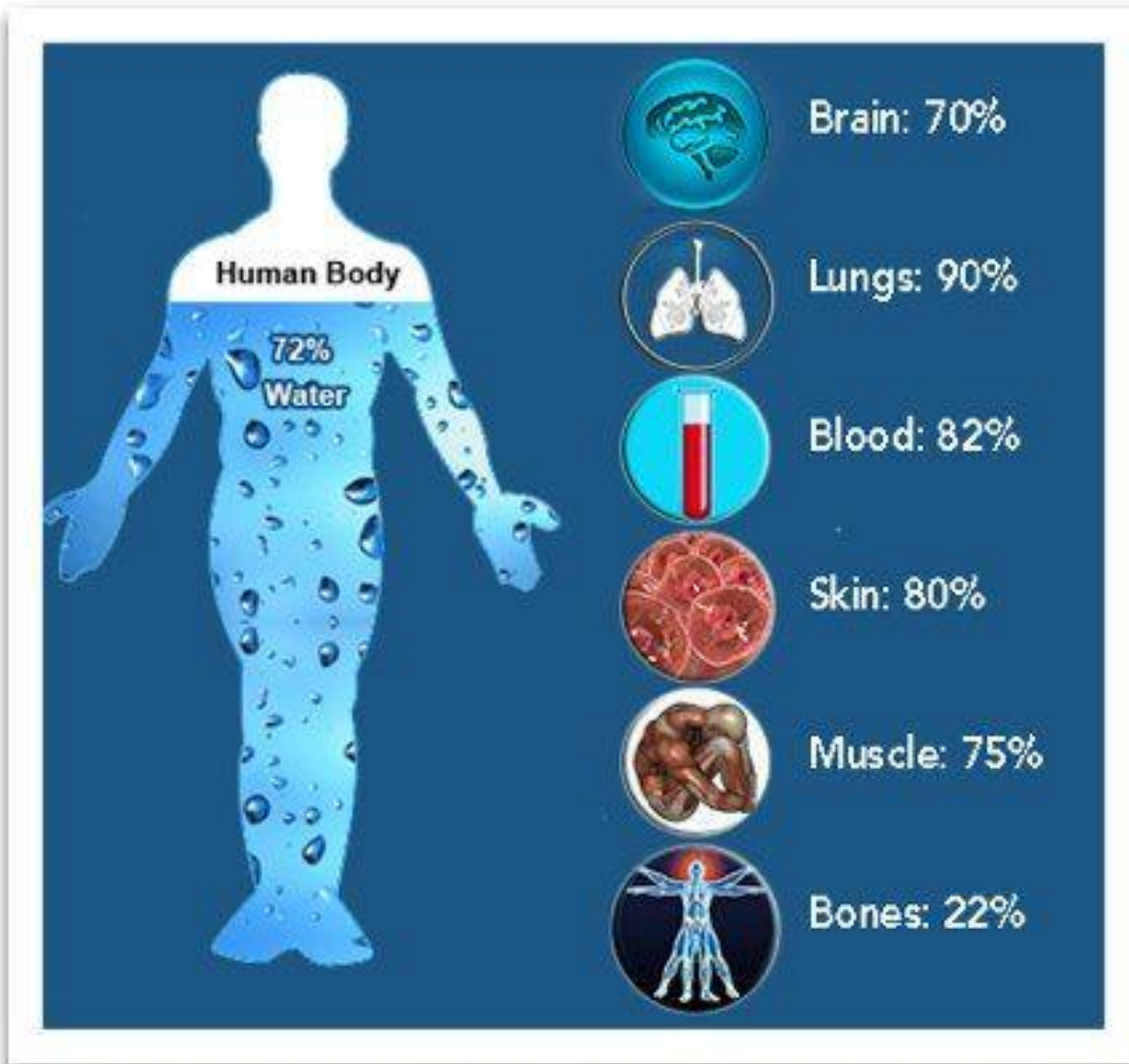
Source: Modified from Levin and Sibuet, 2012, available at <https://doi.org/10.1146/annurev-marine-120709-142714>, with assistance from Andres Algeria.

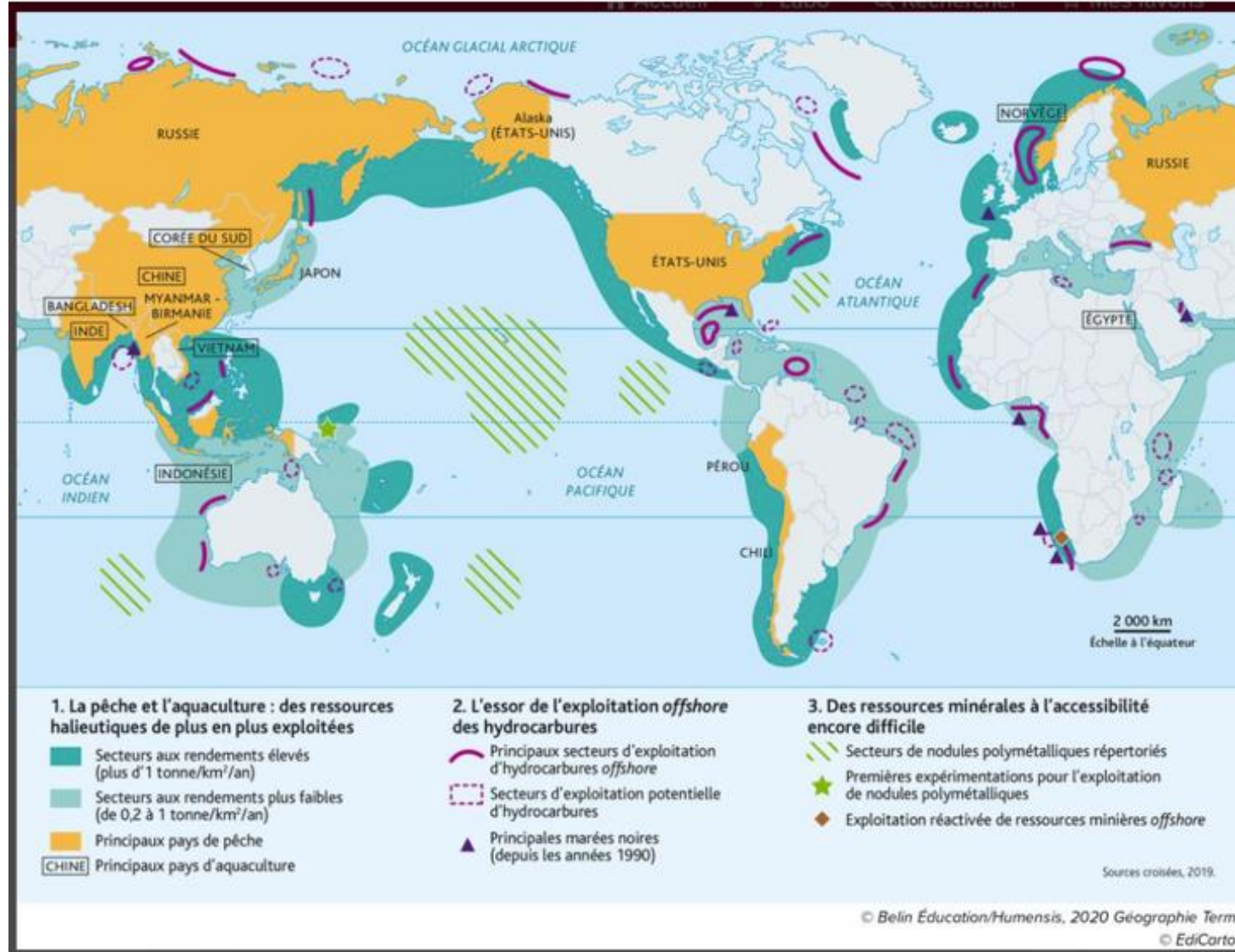
Abbreviations: CMZ, carbon minimum zone ; OMZ, oxygen minimum zone.

Page 64-Coastal waters, at the interface between the catchment area and the sea  
Agence française pour la biodiversité, Matthieu Nivesse (d'après OIEau), 2018



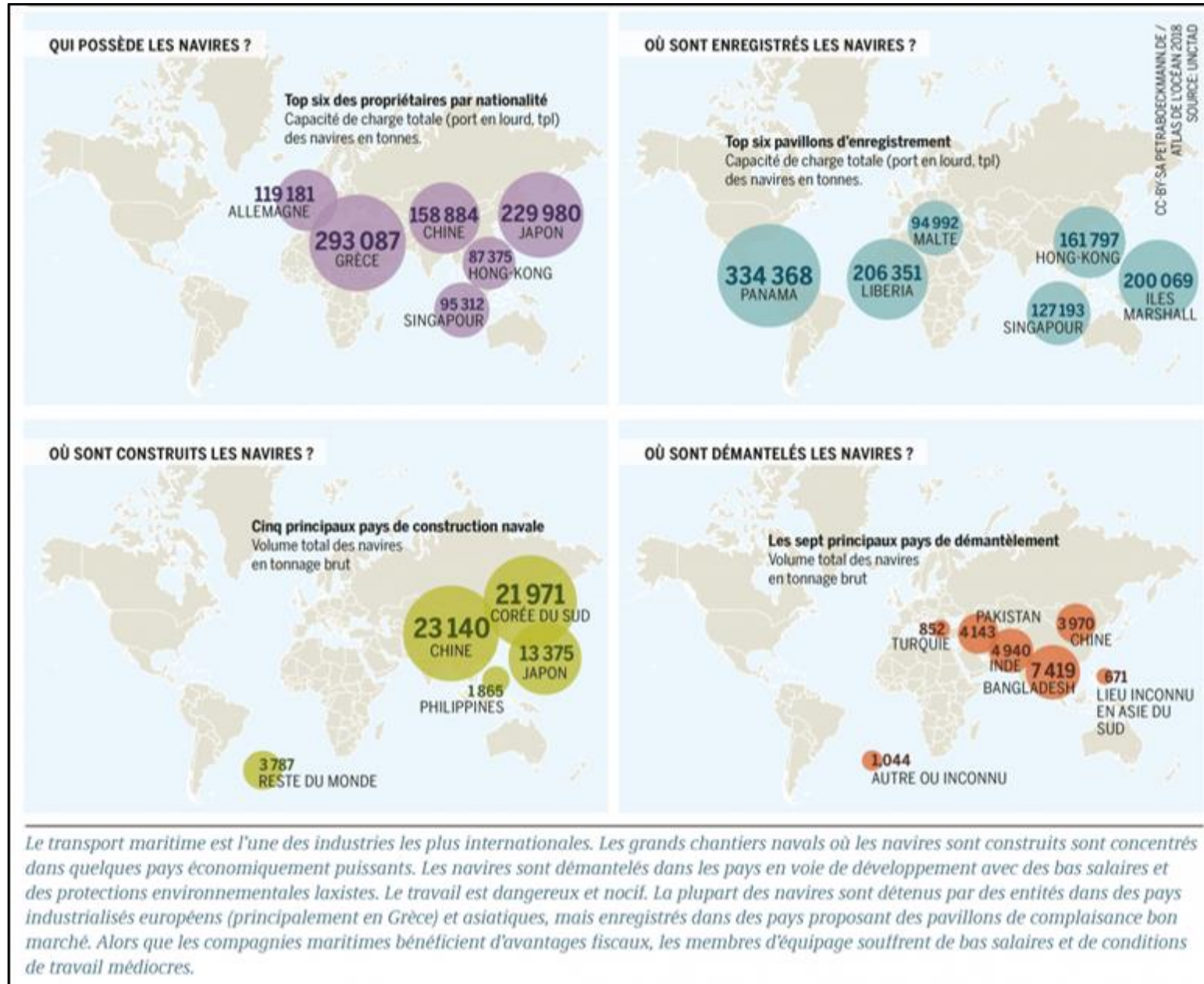




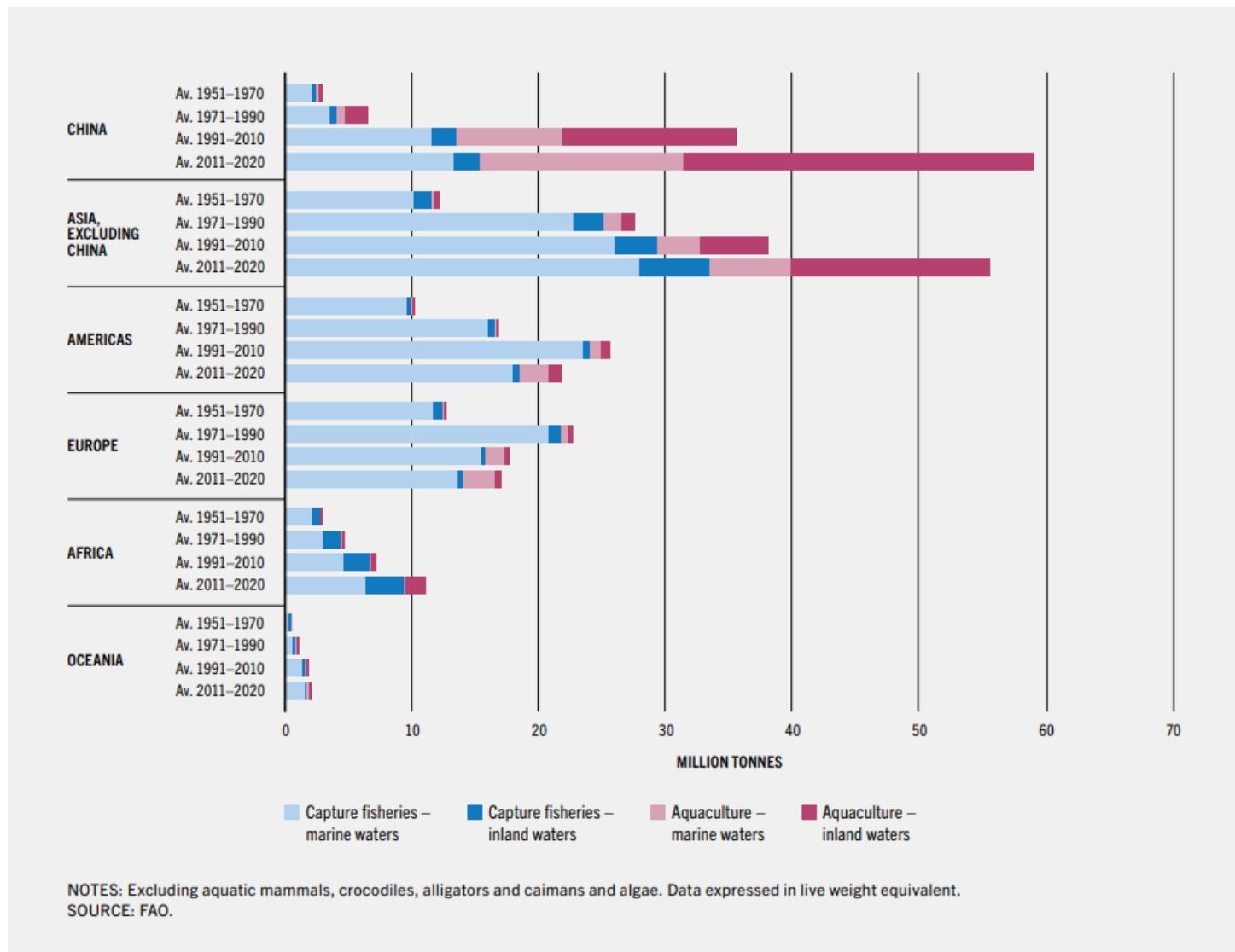




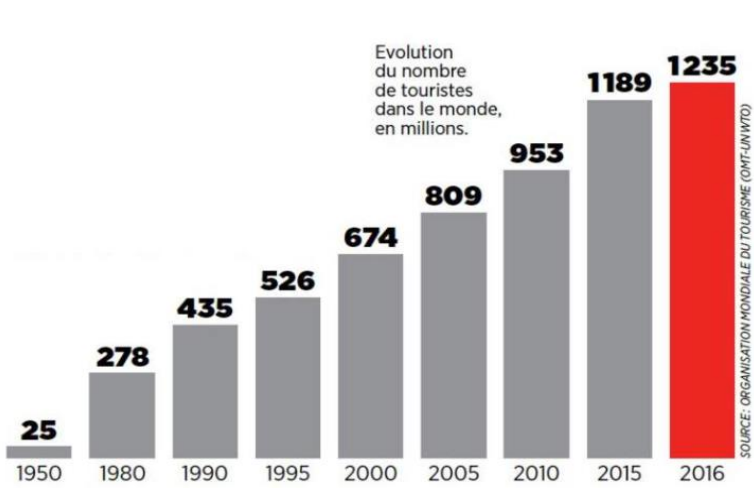
# Page 71-The international maritime transport fleet- "Atlas de l'Océan 2018", Petra Boeckmann, [HBS](#), 2018



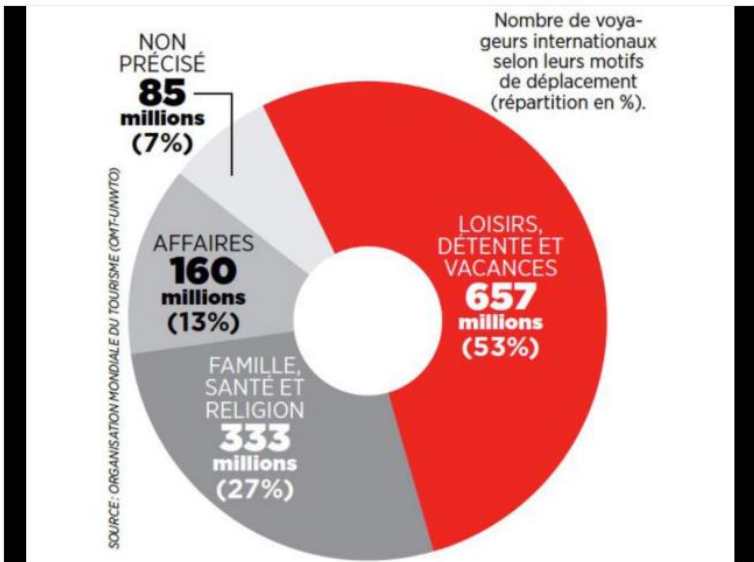




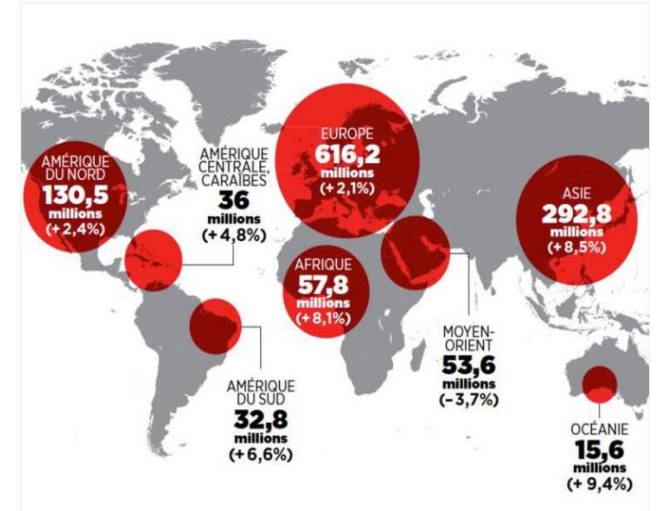
# Page 73-Tourism key figures (1)



Le nombre de touristes en augmentation ininterrompue



Nombre de visiteurs passant au moins une nuit sur place, par mode de transport emprunté pour s'y rendre.

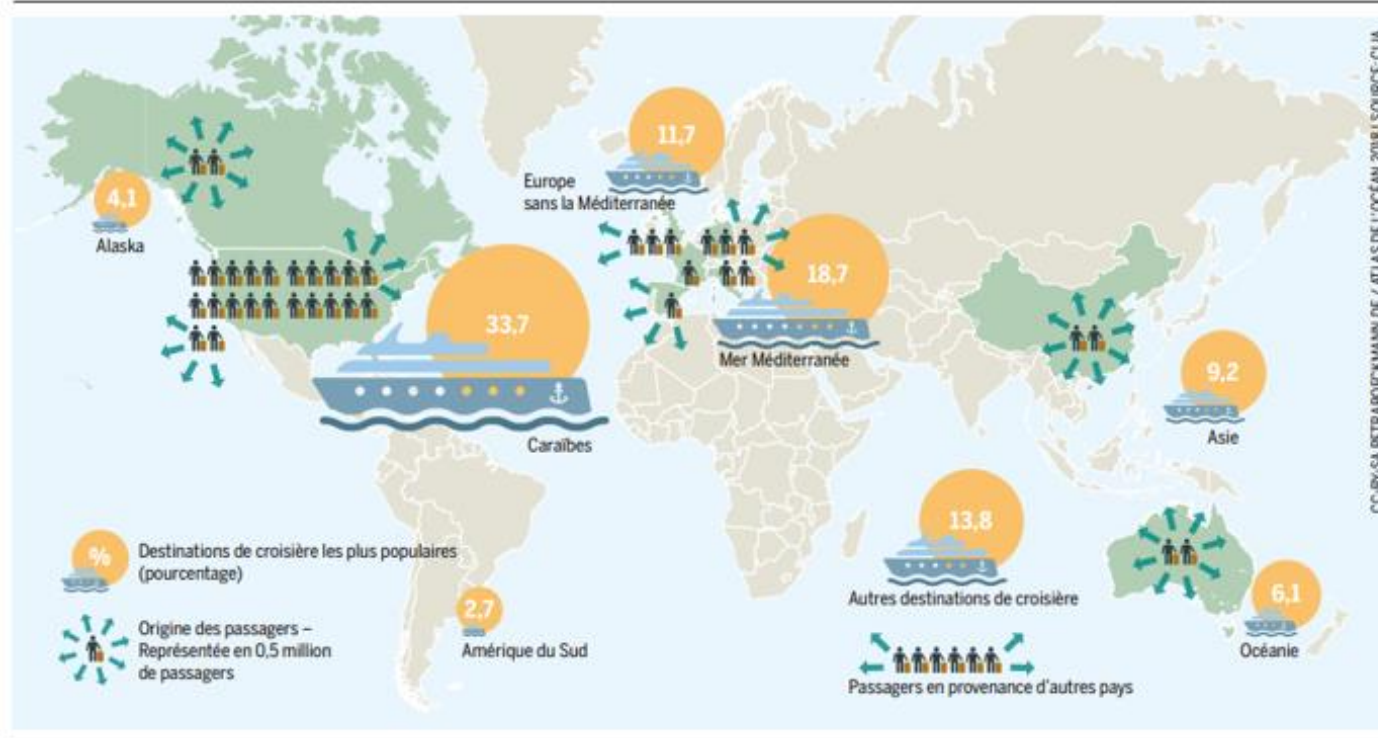


Nombre d'arrivées de touristes internationaux en 2016, en millions (et en % par rapport à 2015).

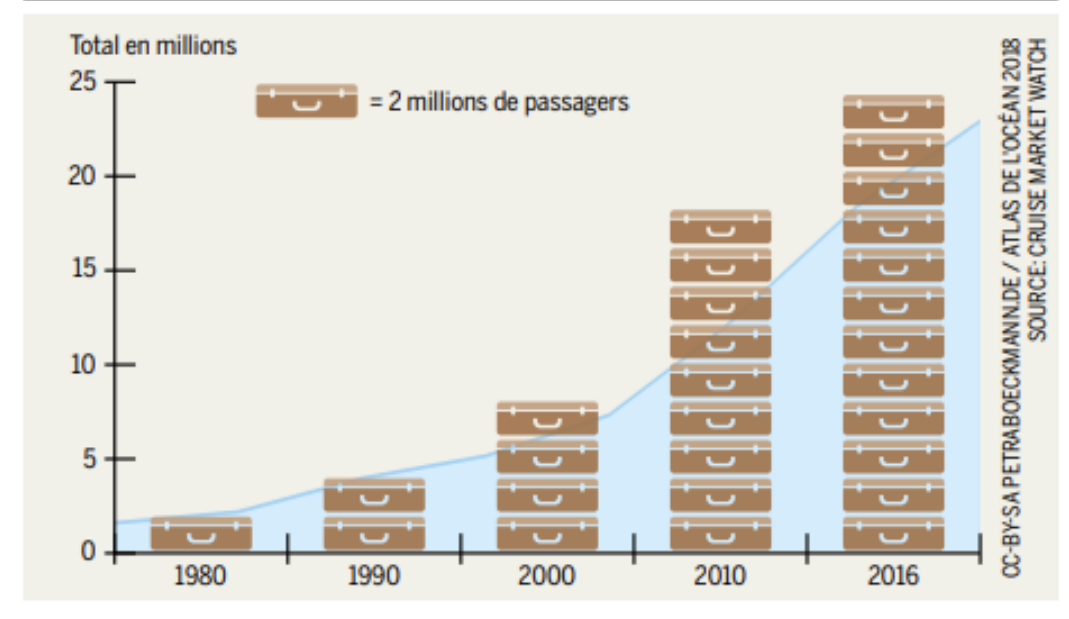




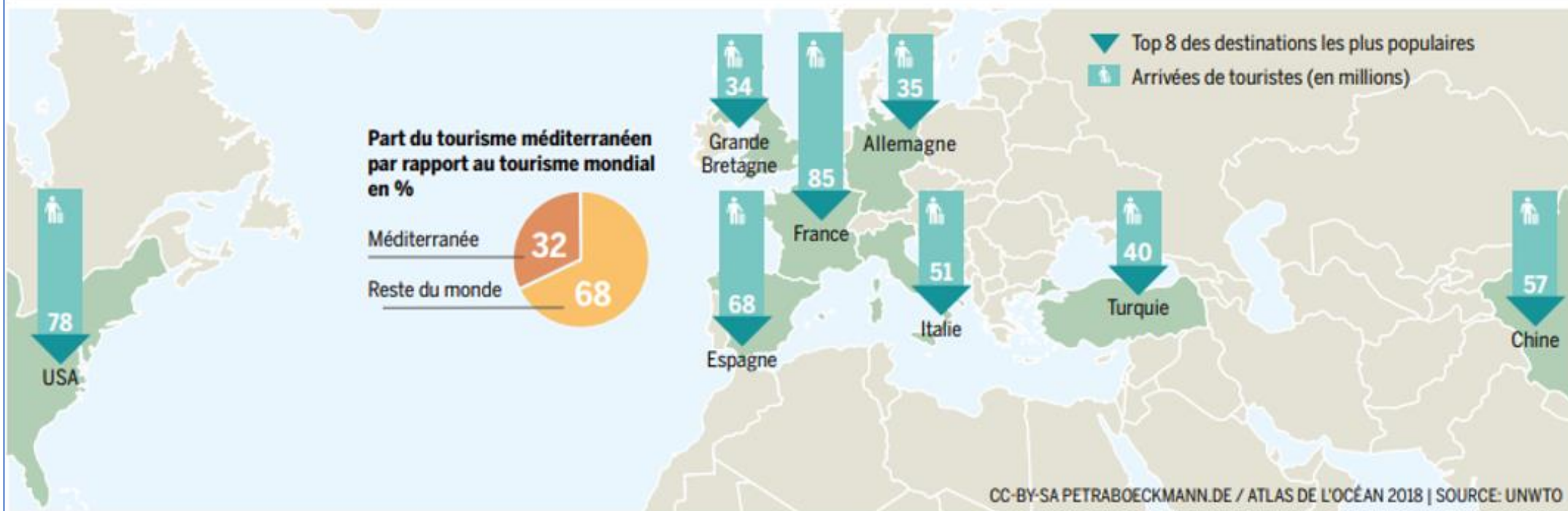
**Le boom du tourisme maritime**



**De plus en plus de touristes passent leurs vacances sur des navires**



### Un tiers des touristes du monde entier voyagent en Méditerranée



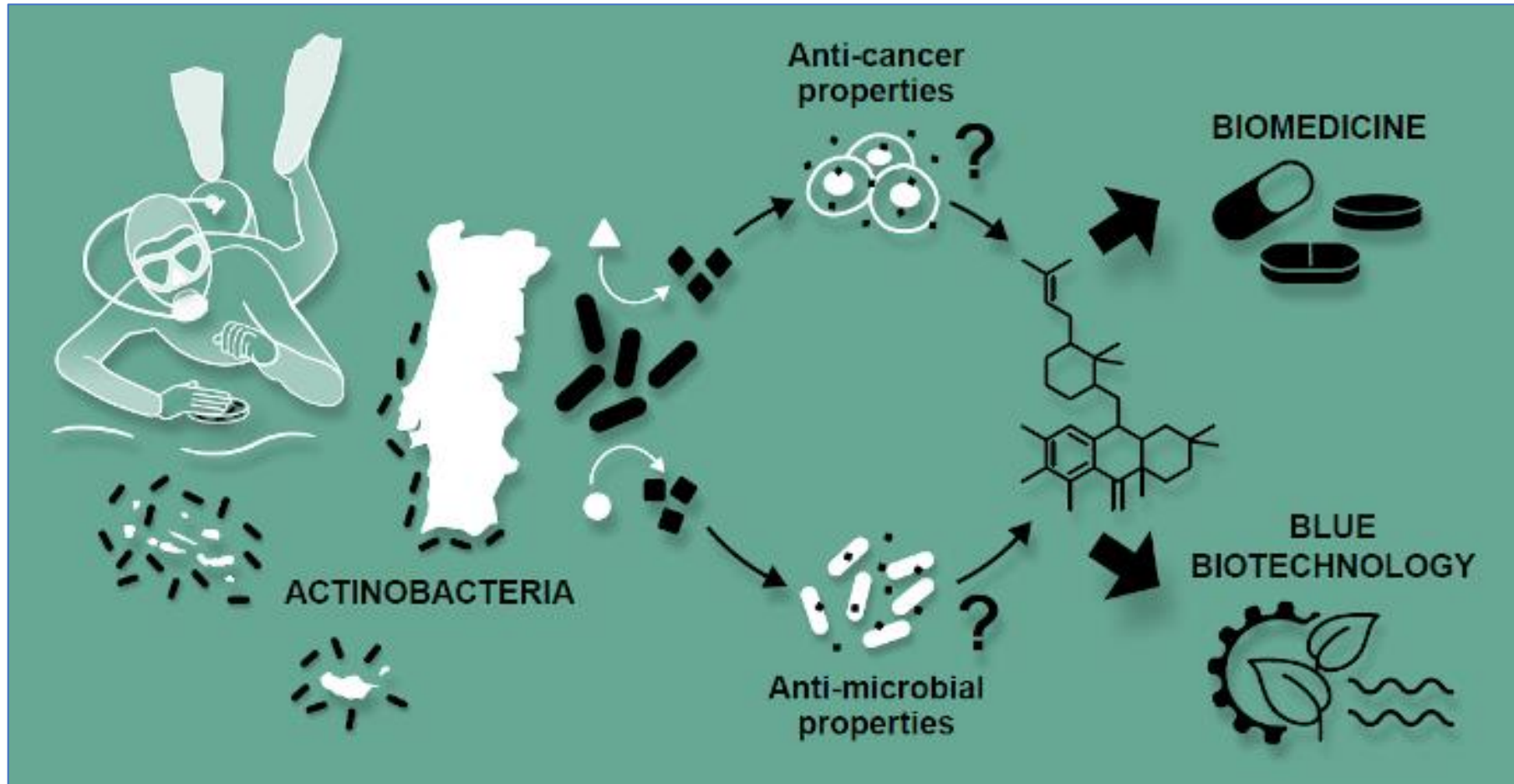
*La Méditerranée est la destination la plus prisée pour les touristes du monde entier, ce qui a pour conséquence de provoquer un certain nombre de problèmes pour la région que les touristes individuels ne voient pas. Le trafic aérien et la circulation accrue augmentent les émissions de CO<sub>2</sub> dans la région. L'expansion des infrastructures, comme les complexes hôteliers et les ports de plaisance, réduit les espaces libres disponibles, et mène à l'urbanisation des régions du*

*pourtour méditerranéen. Chaque touriste souhaite un hébergement confortable, ce qui a pour effet d'augmenter la pression sur les ressources naturelles comme l'eau douce. Il en résulte également en même temps la production de grandes quantités d'eaux usées et d'ordures. Les nombreux touristes sont aussi une contrainte pour les plages et les dunes, car plus le nombre de personnes est élevé, plus les effets négatifs des foules sur les écosystèmes sont amplifiés.*

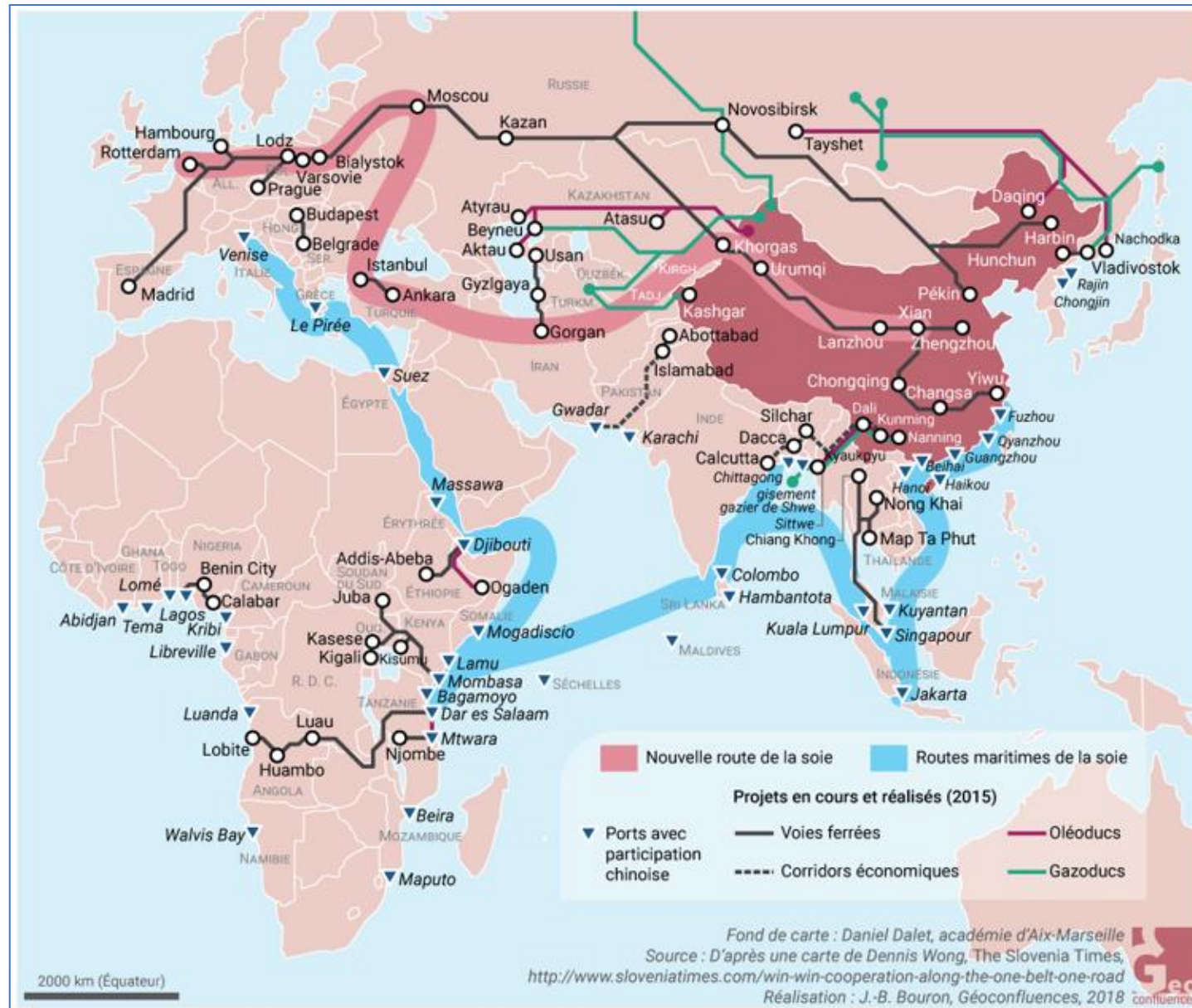


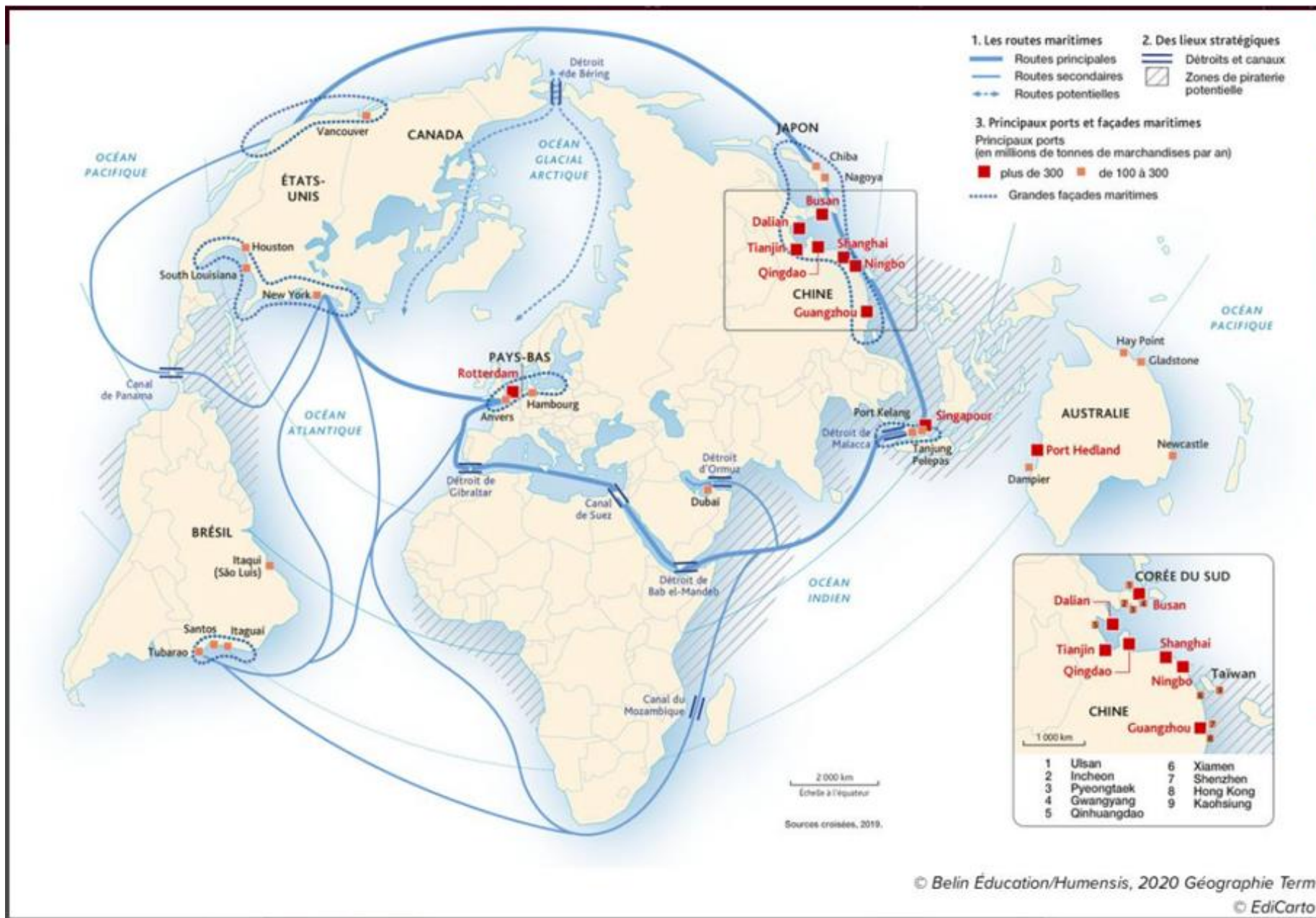


Page 76-"Blue Technology", [Marine Natural Products for Blue Biotechnology and Biomedicine Applications](#)







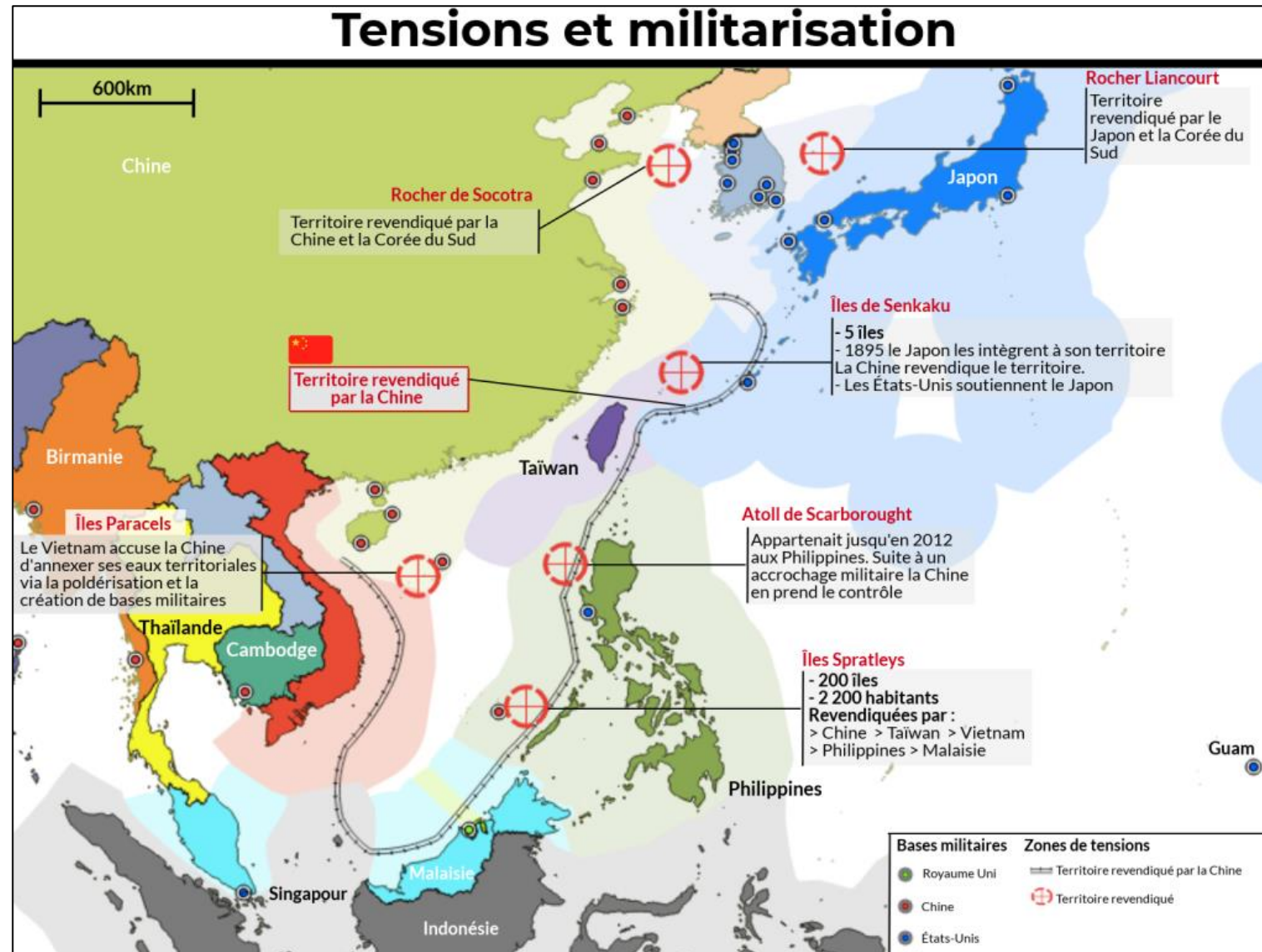


# Page 83-The new Arctic shipping routes

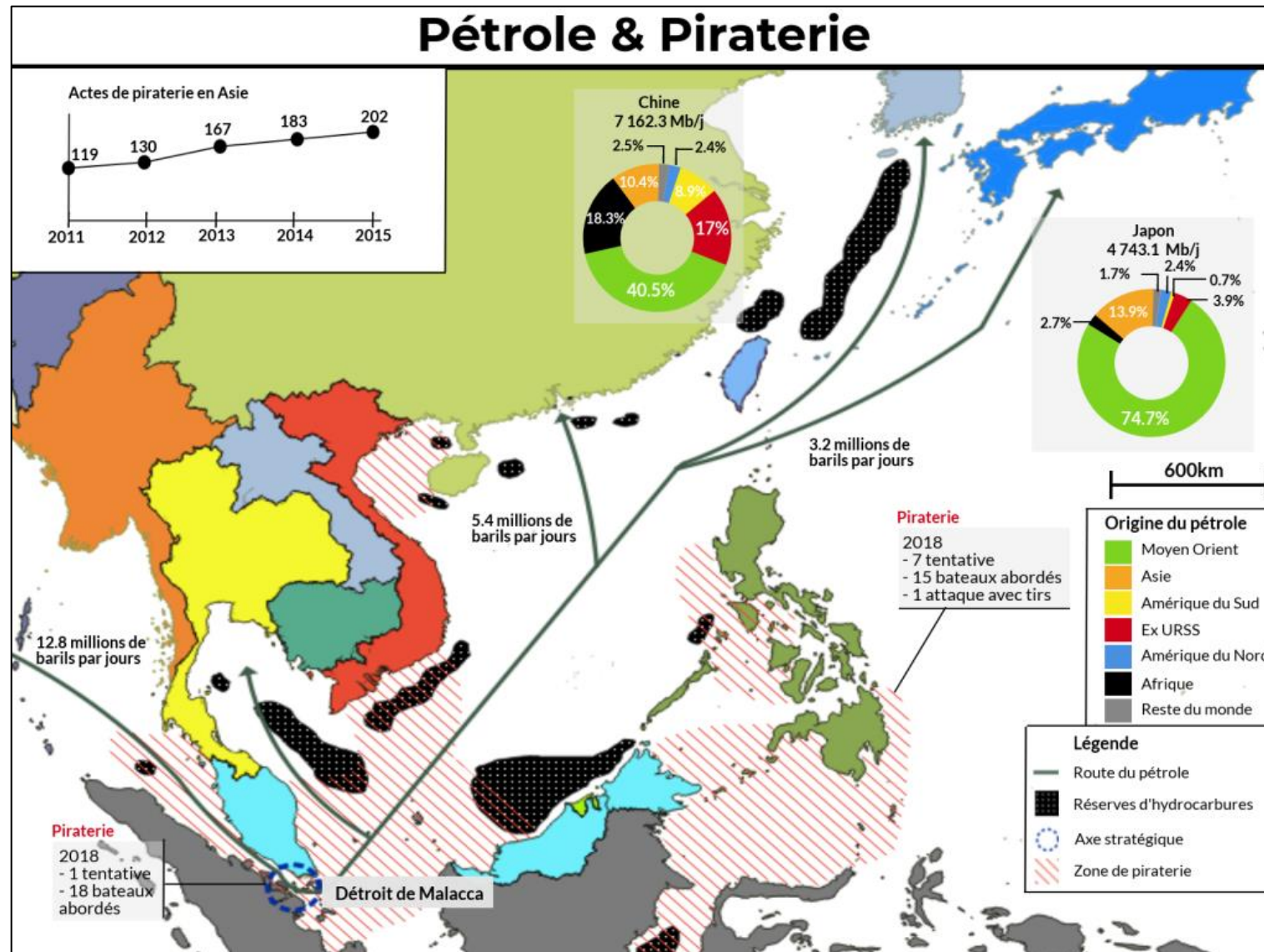


*The Geography of Transport Systems, "Polar Shipping Routes". Northern Sea Route : RNM / Northwest Passage : PNO*











Page 85-Military bases in the Arctic (red squares),  
TAI/CPB/USNSIDC/Pettersson, Rigdon & Shveda







892 total losses in 10 years



**December and May** - the most frequent months for total losses in 2021 (7 each)



**13** Minimum number of total losses where **extreme weather** was reported as being a factor



54 total losses in 2021.  
57% decline over a decade



27 cargo ships lost in 2021 –  
50% of all vessels lost



3,000 shipping incidents in 2021 – up year-on-year. Machinery damage is the top cause



28

average age of a total loss vessel over the past decade

6 incidents involving the most accident-prone vessels in 2021 – a Greek Island ferry a Scottish island ferry, and an Alaskan ferry

668 incidents in 2021 in the British Isles, North Sea, English Channel and Bay of Biscay region

1 in 5 total losses in 2021 occurred in South China, Indochina, Indonesia and Philippines – the global hotspot